

47/113

113

WATER MANAGEMENT TRACT

(TO BE MAINTAINED BY ST. ANDREWS COUNTRY CLUB PROPERTY OWNERS ASSOCIATION INC.)

UNPLATTED

CLARIDGE OVAL WEST

MATCH LINE "E"

TRACT "A"

TRACT "A"

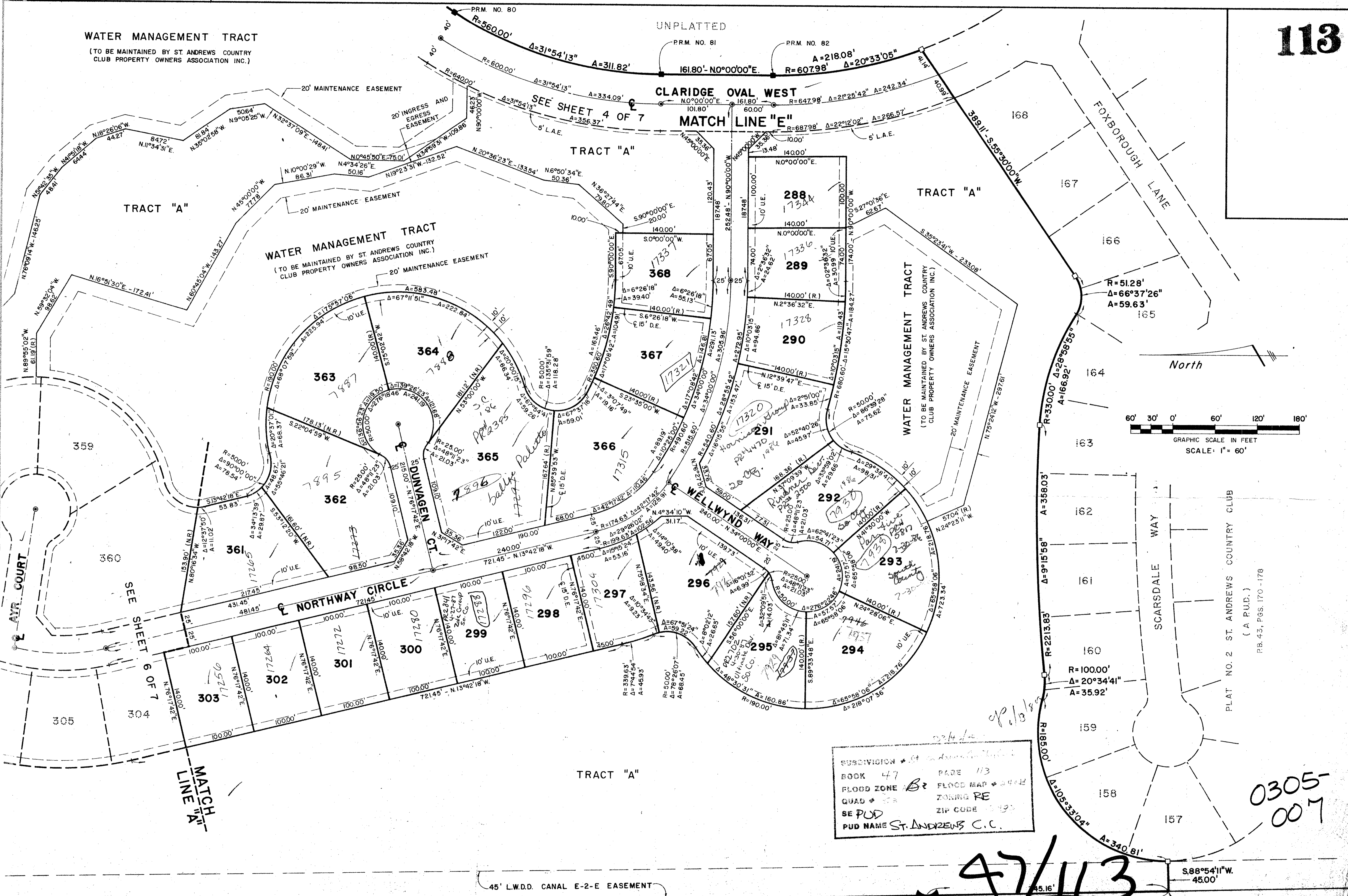
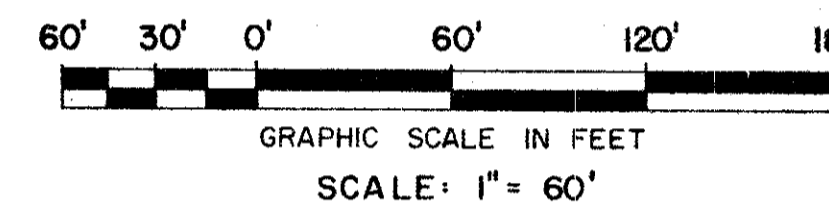
WATER MANAGEMENT TRACT

(TO BE MAINTAINED BY ST. ANDREWS COUNTRY CLUB PROPERTY OWNERS ASSOCIATION INC.)

WATER MANAGEMENT TRACT

(TO BE MAINTAINED BY ST. ANDREWS COUNTRY CLUB PROPERTY OWNERS ASSOCIATION INC.)

North



SUBDIVISION * St. Andrews Country Club
BOOK 47 PAGE 113
FLOOD ZONE B2 FLOOD MAP * 34413
QUAD * ZONING RE
SE PUD ZIP CODE 33493
PUD NAME ST. ANDREWS C.C.

0305-007

47/113

PLAT No. 5

ST. ANDREWS COUNTRY CLUB (A P.U.D.)

WILLIAM G. WALLACE, INC. CONSULTING ENGINEERS, LAND PLANNERS & SURVEYORS 301 NORTH LAKE BLVD., HO. PALM BEACH, FL. 33481-2525 3241 SW MAPLE RD., PALM CITY PLAZA, PALM CITY, FL. 32909-3026			
FIELD	M. BONIN	JOB NO.	83-640
OFFICE	R.M. RODANO	DATE	NOV., 1983
CKD	REF.	DWG. NO.	83-640
		SHEET	5 OF 7

PLANNING 14-32 51.439